

GENERAL NOTES

THIS DRAWING TO BE READ IN CONJUNCTION WITH ARCHITECT'S DRAWINGS, ARCHITECT'S SPECIFICATIONS, CONTRACT DOCUMENTS, CONDITIONS OF CONTRACT, AND LANDSCAPE ARCHITECT'S DRAWINGS.

REFER TO ARCHITECT'S SITE PLAN R1.002 and R1.003 FOR NORTH ORIENTATION, LEVELS GIVEN HOUSE TYPE DRAWINGS ARE GIVEN TO A LOCAL ABSOLUTE ZERO LEVEL FOR SPECIFIC DETAILS DEPENDING ON INDIVIDUAL OFFERS.

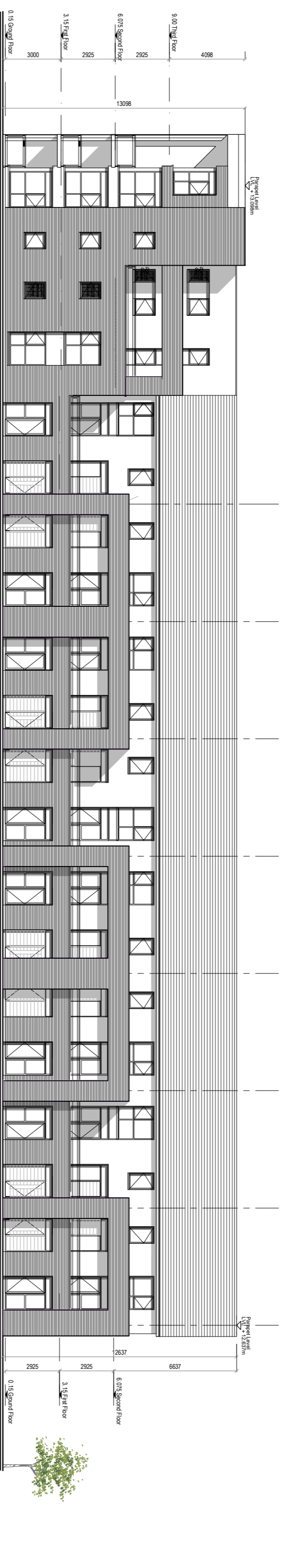
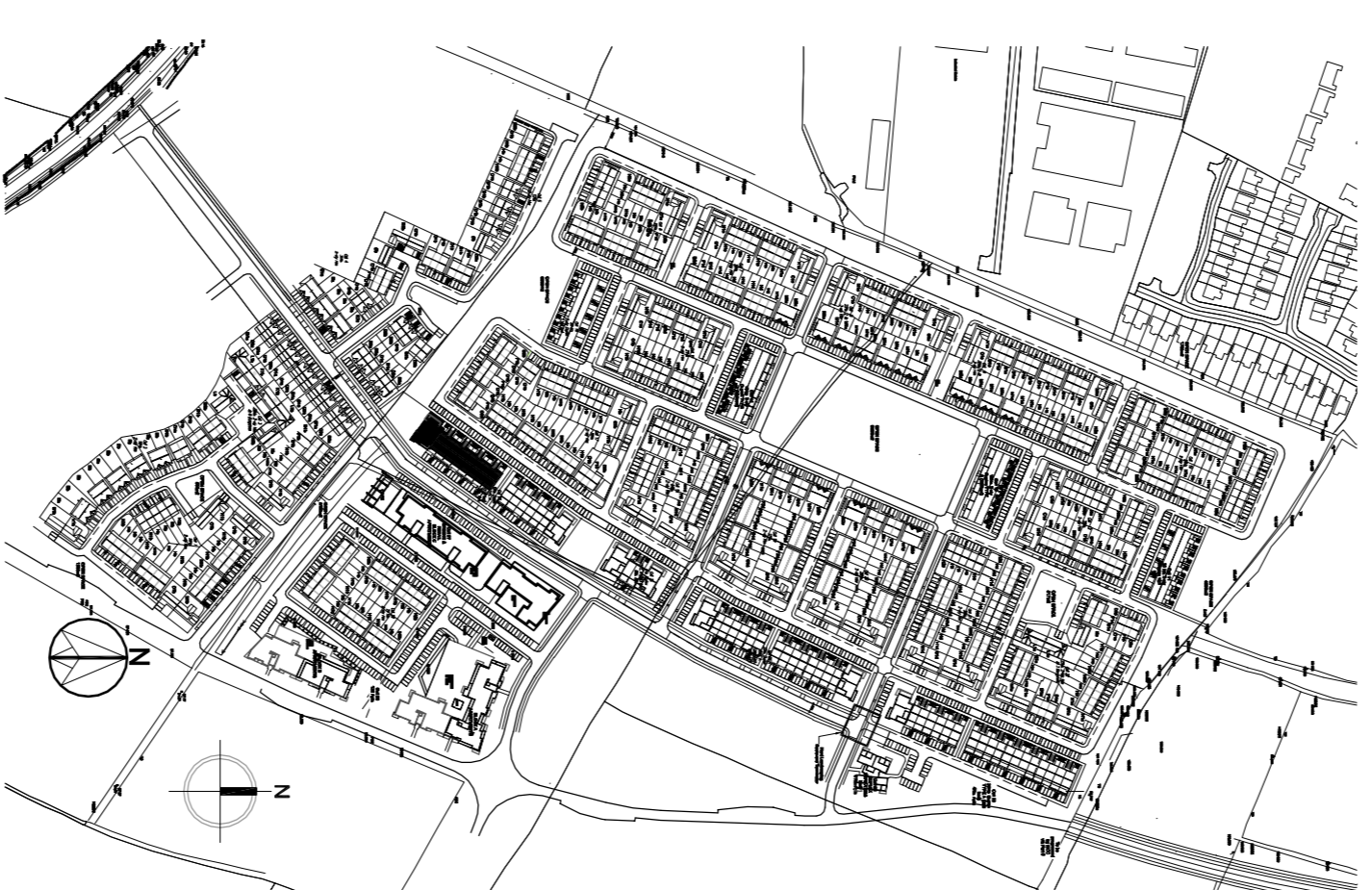
REFER TO ARCHITECT'S SPECIFICATIONS FOR MATERIALS AND FINISHES. DRAWINGS WHERE LEVELS ARE ALL GIVEN IN RELATION TO LAND SURVEYORS BENCHMARK BASED ON MALINI HEAD DATUM LEVEL.

REFER TO SITE LAYOUT PLAN FOR NORTH ORIENTATION
REFER TO CONSULTING ENGINEERS DRAWINGS FOR BLOCK LEVELS

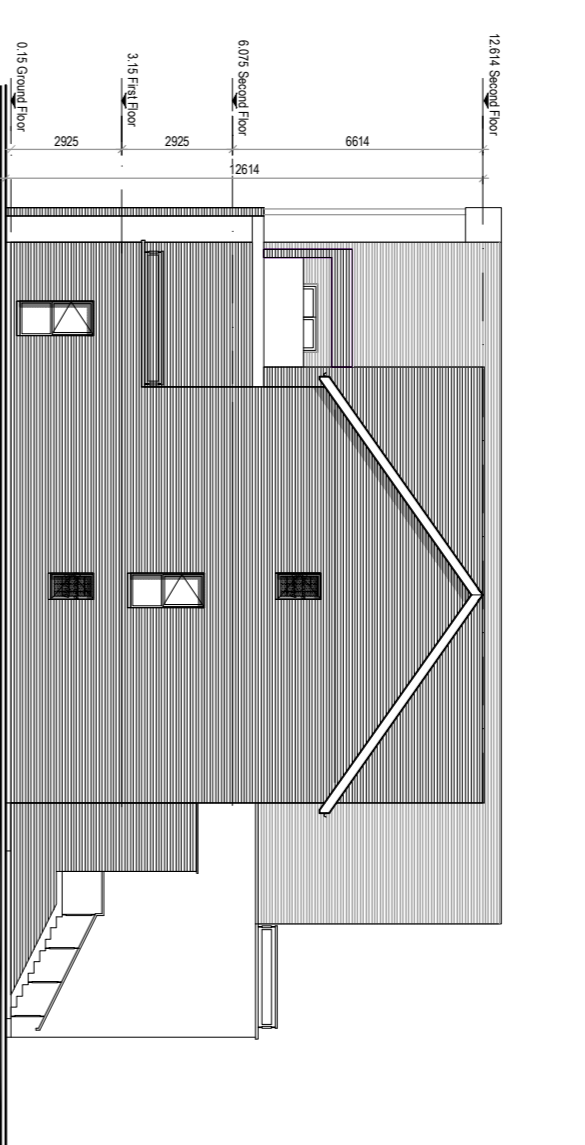
NOTES ON FINISHES:

- ROOF: TO BE FINISHED IN SLATE OR CONCRETE ROOF-TILES IN SELECTED COLOUR OR SIMILAR APPROVED.
- FLAT ROOF: SELECTED COLOUR OR SIMILAR APPROVED FLASHINGS.
- WALLS: SELECTED CLAY BRICKWORK WHERE INDICATED OTHERWISE PAINTED SAND / CEMENT RENDER OR SELF COLOURED RENDER ON STONE CLADDING AS INDICATED.
- JOINERY: ALL WINDOWS AND DOORS FRAMES AND LEAVES TO BE OR UPVC OR PAINTED TIMBER TO APPROVED COLOUR. OBTAIN SAMPLES AND APPROVED COLOUR MATCHES TO BE OBTAINED FROM SUPPLIER.
- FEATURES: GUTTERS, DOWNPIPES, AND FININGS TO BE UPVC OR ALUMINIUM POWDER COATED TO SELECTED COLOUR TO MATCH ROOF SLATES.
- * SOLAR PANELS: INDICATIVE SOLAR PANEL POSITION. FINAL SOLAR PANEL POSITION DEPENDS ON HOUSE ORIENTATION. THE SOLAR PANELS SHOWN ARE A PROVISIONAL OPTION TO SATISFY PART 1. SOLAR PANELS MAY BE OMITTED IN FAVOUR OF ALTERNATIVE RENEWABLE ENERGY SOURCE.

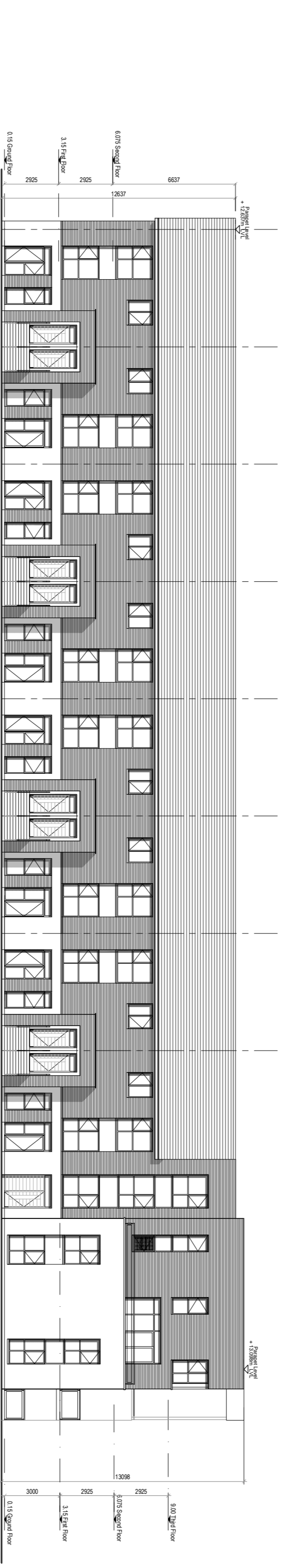
KEY PLAN (N.T.S.)



SOUTH EAST ELEVATION



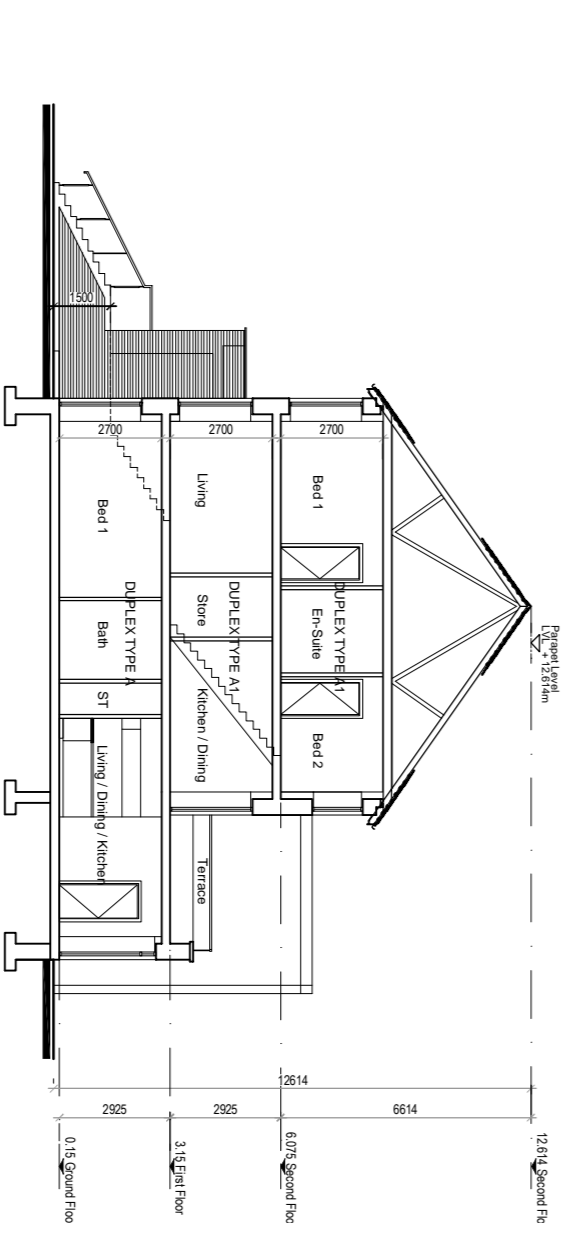
NORTH EAST ELEVATION



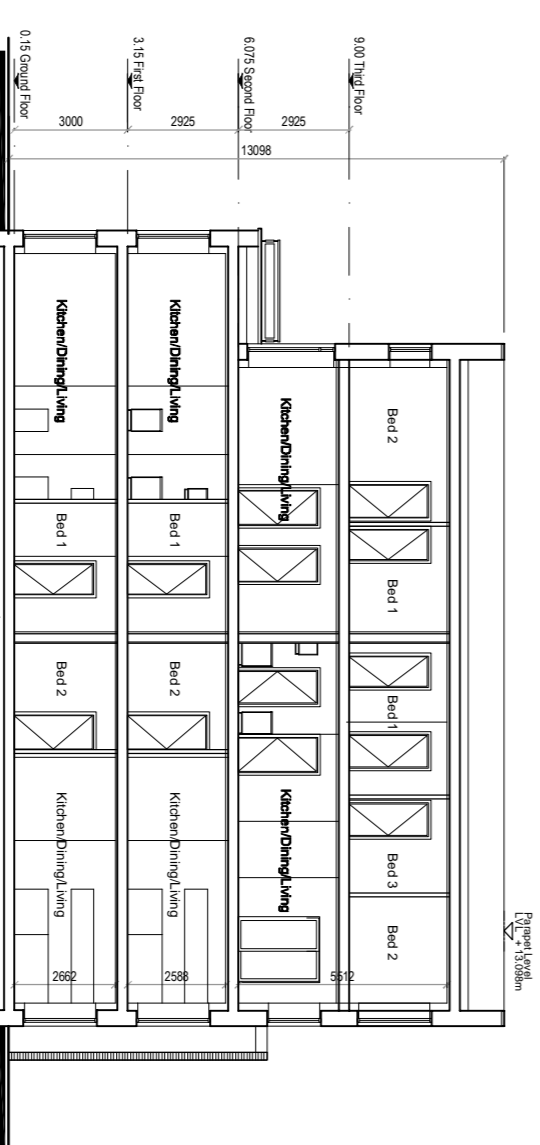
NORTH WEST ELEVATION



SOUTH WEST ELEVATION



SECTION A - A



SECTION B - B

NOTES:

DO NOT SCALE FROM THIS DRAWING. DIMENSIONS SHOWN ONLY. ARCHITECT TO BE NOTIFIED OF ALL DISCREPANCIES.

REVISIONS

NO.	DESCRIPTION



MCRM
MCR CROSSAN ENGINEERING ARCHITECTS

PROJECT TITLE	DATE	DRAWN BY
The Willows, Dunshaughlin	Dec 18	DE
DRAWING TITLE	SCALE	REVISION
Proposed Duplex Cat 2a	1:200 @ A1	
Elevations & Sections		
CLIENT NAME: MCR CROSSAN ENGINEERING ARCHITECTS		
CLIENT ADDRESS: 11, NEWTON ROAD, DUNSHAUGHLIN, CO. DU, K18 8XN		
PROJECT NO: 16028_1	DRAWING NO: 202	